

BATTLE OF CHOLM POCKET, 1942

READER SOLUTION

Commander, you have various options to consider for this mission. Check the box next to the course of action you choose and draw your solution on the map.

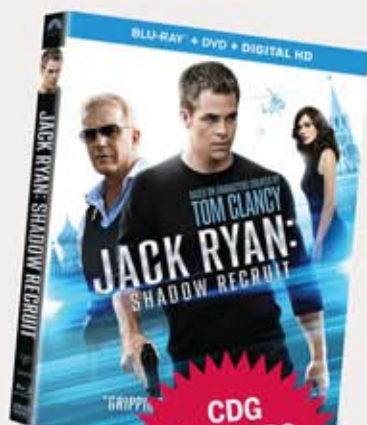
Explain your solution in the space provided (200 words max). You can also download a PDF of the CDG map at www.armchairgeneral.com/cdg.

COA 1: DOUBLE ENVELOPMENT
Attack the Soviet defenders from both the right and left flanks simultaneously.

COA 2: LEFT HOOK
Envelop the enemy position with a powerful flank attack from the left.

COA 3: BROAD FRONT
Overwhelm the Soviets by striking at multiple locations along the front line.

OTHER COA:
You have an alternative course of action in mind.



CDG WINNERS GET A FREE DVD!

Battle of Cholm Pocket
January 1942

N 0 250 500 750 yards
0 250 500 750 meters

Legend:

- III** Kampfgruppe Scherer =
 - 1 MG Bn. 10
 - 2 Res. Pol. Bn 65
 - 3 Pl. Bn. 656
 - 4 Jagd Kmdo 8
 - 5 II/386 LR
 - 6 IV/Art. Reg. 123
 - 7 Gruppe Treu
- XX (-)** 218th
- III (-)** 73d
- III (-)** 73d
- III (-)** 164th
- III (-)** 82d
- X** Kampfgruppe Scherer

Map labels: Lovat, Tannery, Airfield, West Bank, Church, Cholm, East Bank, Hairpin Curve, Kupa, Medovo.

